

Titan Radio Programming Software & Cable Installation

1. Install the [Prolific_DriverInstaller_v2.exe](#) file.

(Skip step #1 if you already have the Titan Radio driver installed, you only need to install once)

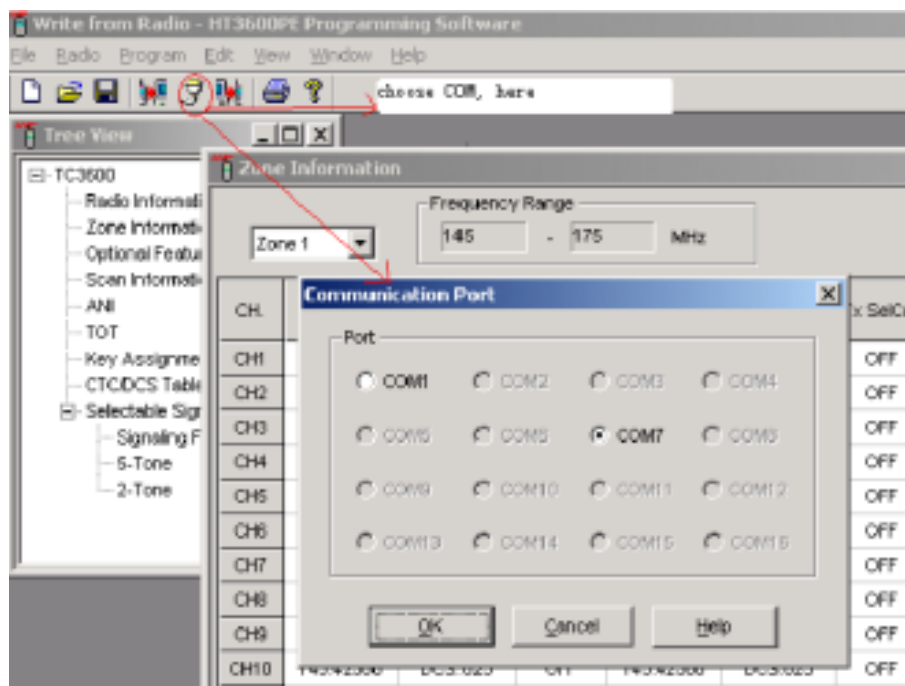
2. Install the [TR300 Programming Software setup.exe](#) file.

3. Connect the USB programming cable to the computer and wait for Windows to finish installing the driver.

4. Connect the programming cable to the Titan Radio and turn the radio on.

5. Double click on the Titan Radio Programming Software icon installed on the Windows desktop.

6. In the programming software click on the Communications Port button to specify an available COM port. (This step is not always required. With the radio powered “on” press the “read from radio” button first and see if the information from the Titan Radio is uploaded, if so, ignore this step as the port was automatically selected)



Notice that only certain COM ports are available to choose from. Select an open COM port and click “OK” then press the “Read from Radio” button. If the selected port is incorrect try using the next open port until the radio can be read.

Each time the software is opened you must first start by selecting the “Read from Radio” button. This tells the software if the radio you are trying to program is UHF or VHF.

Call Titan Radio at 800-411-7080 for support.